



The Mount Laurel



6 Inspiration Pl

Base price \$191,000.00
Type Bi-level --1144 sq ft
Layout 6 Room - 3 Bedroom
Baths 1 Full Baths
Garage 20' x 20'

Ask about our supplier special
Price includes Piled Foundation and net GST

Spec Home Extras: Charcoal Stain
Kitchen Cabinets and matching wood
accents, Paint upgrade, Bedroom
Cantelever w lights, Supplier Special,
Basement perimeter electrical insulated
Garage door, 20 x 22 ft Garage

Subtotal \$9,385.00

Spec Home \$200,385.00 plus lot

*House and lot prices are subject to change
without notice.*

www.odessyhomes.ca

* While all information contained herein has been provided by the vendor(s) and deemed reliable, this information cannot be guaranteed by Century 21 Carrie.com/Access Properties LTD. as to its accuracy. Each Office is Independently Owned and Operated. ® and ™ Registered Trademarks of Century 21 Real Estate Corporation. Used under License.

FOR MORE INFORMATION CONTACT

Gerald Lamoureux: 942-8383

Norman Boyle: 987-2100



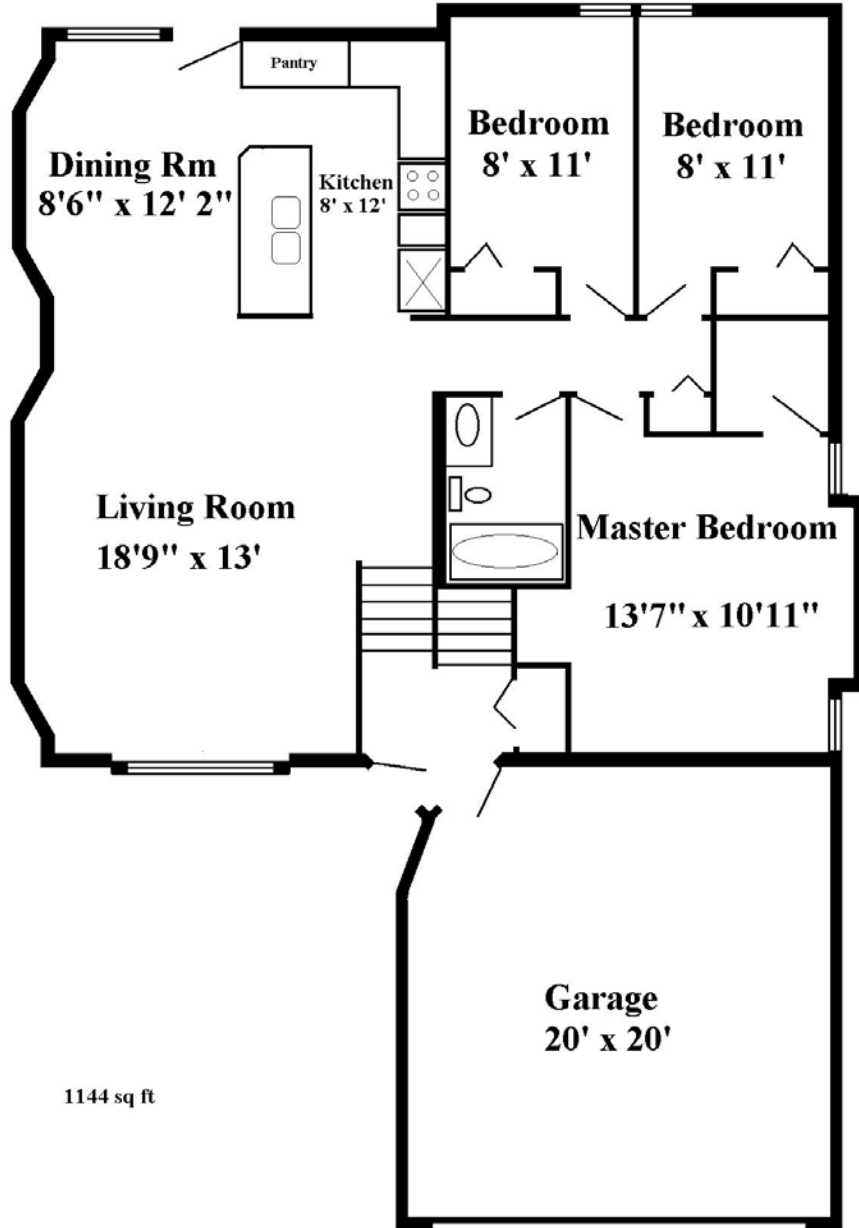
ODESSY HOMES LTD ADVANTAGE

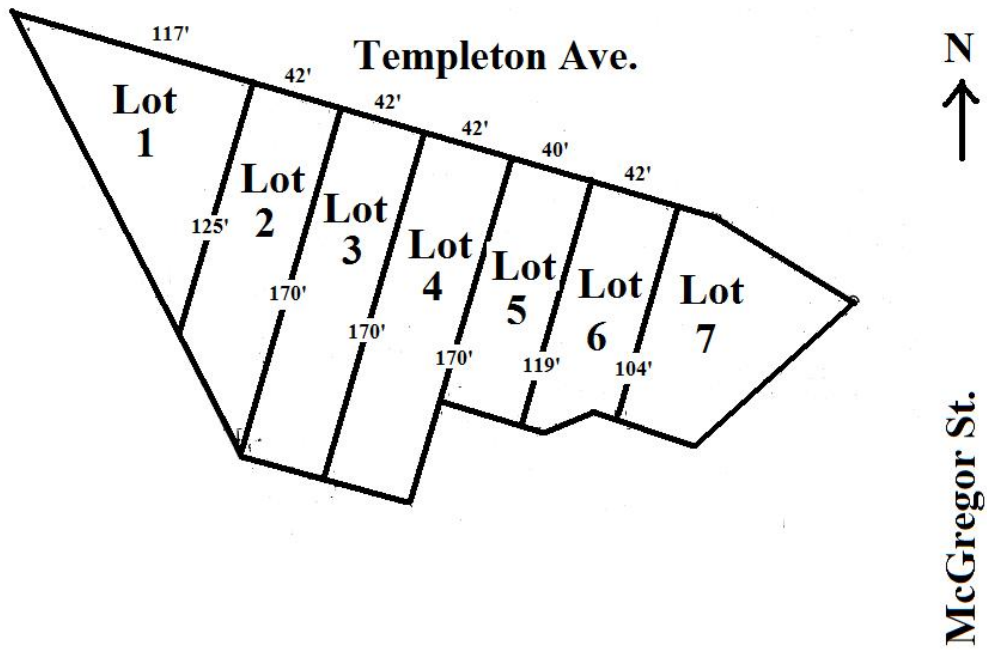
Included in our price for 2009

- 1) Purchaser chooses the color scheme of home with help of designer
- 2) Includes high energy efficient furnace
- 3) Tripane or low E PVC windows (casement windows used in all bedrooms and where design permits)
- 4) 2 x 6 energy efficient construction
- 5) Piled foundation
- 6) R20 Fiberglass insulation in walls
- 7) R40 Fiberglass blown in insulation in ceiling
- 8) R12 Interior insulation in basement with added Styrofoam to frost line and acoustical air sealant
- 9) Roughed in plumbing in basement (waste lines)
- 10) 40 Gallon electric hot water tank
- 11) Sump pump and back water valve
- 12) Deadbolt locks
- 13) Construction stage survey certificate and Zoning Memorandum included
- 14) Dozens of choices available to upgrade and personalize your home
- 15) Five year new home warranty
- 16) Twenty years of experience in energy efficient building techniques
- 17) Low maintenance exterior home design to enhance street appeal
- 18) Experienced sales consultants to assist you
- 19) Discount mortgage rates OAC
- 20) House wrap installed to enhance energy efficiency
- 21) Floor float basement perimeter framing
- 22) Colonist or oak interior doors standard
- 23) Window grills on front elevation included
- 24) Enhance lighting packages included with pot lights
- 25) Upgraded door hardware included
- 26) Oak or maple cabinets standard in most models (Mount Laurel and Richmond models excluded)
- 27) Wood capping on half walls included
- 28) Round drywall corners included
- 29) Kitchen range hood included
- 30) Supplier special discounts available
- 31) Appliance package discounts available
- 32) Designer niches included, some with lighting
- 33) Brickwork included on front elevations
- 34) One piece tubs and shower units standard
- 35) Two exterior frost free taps
- 36) 20 ft wide garage available on all models (Richmond model excluded)
- 37) All models are designed to reduce the need for landings in garage
- 38) Basement designed to create maximum space efficiency

*While all information contained herein has been provided by the vendor(s) and deemed reliable, this information cannot be guaranteed by Century 21 Carrie Realty Ltd. as to its accuracy.

Floor Plan for 6 Inspiration Place





Lot 2	Plan 49538	42 X 125	\$74,500
Lot 3	Plan 49538	42 X 170	\$80,000
Lot 4	Plan 49538	42 X 170	\$80,000
Lot 6	Plan 49538	42 X 104	\$74,500