



The Richmond

860 ft2 Bi-level



(Picture is of Former Showhome)

Show Home Extras - Basement Electrical-Supplier Special, Insulated Garage Door

House and lot prices are subject to change without notice.

Type	Bi-Level
Layout	5 Room - 2 Bedroom
Baths	1 Full Bath
Garage	18' x 20'

Ask about our Supplier Special
Not exactly as illustrated.
Price includes Piled Foundation and net GST

www.odessyhomes.ca

* While all information contained herein has been provided by the vendor(s) and deemed reliable, this information cannot be guaranteed by Century 21 Carrie.com/Access Properties LTD. as to its accuracy. Each Office is Independently Owned and Operated. © and ™ Registered Trademarks of Century 21 Real Estate Corporation. Used under License.

FOR MORE INFORMATION CONTACT

Lilita Klavins 987-2100

The Richmond



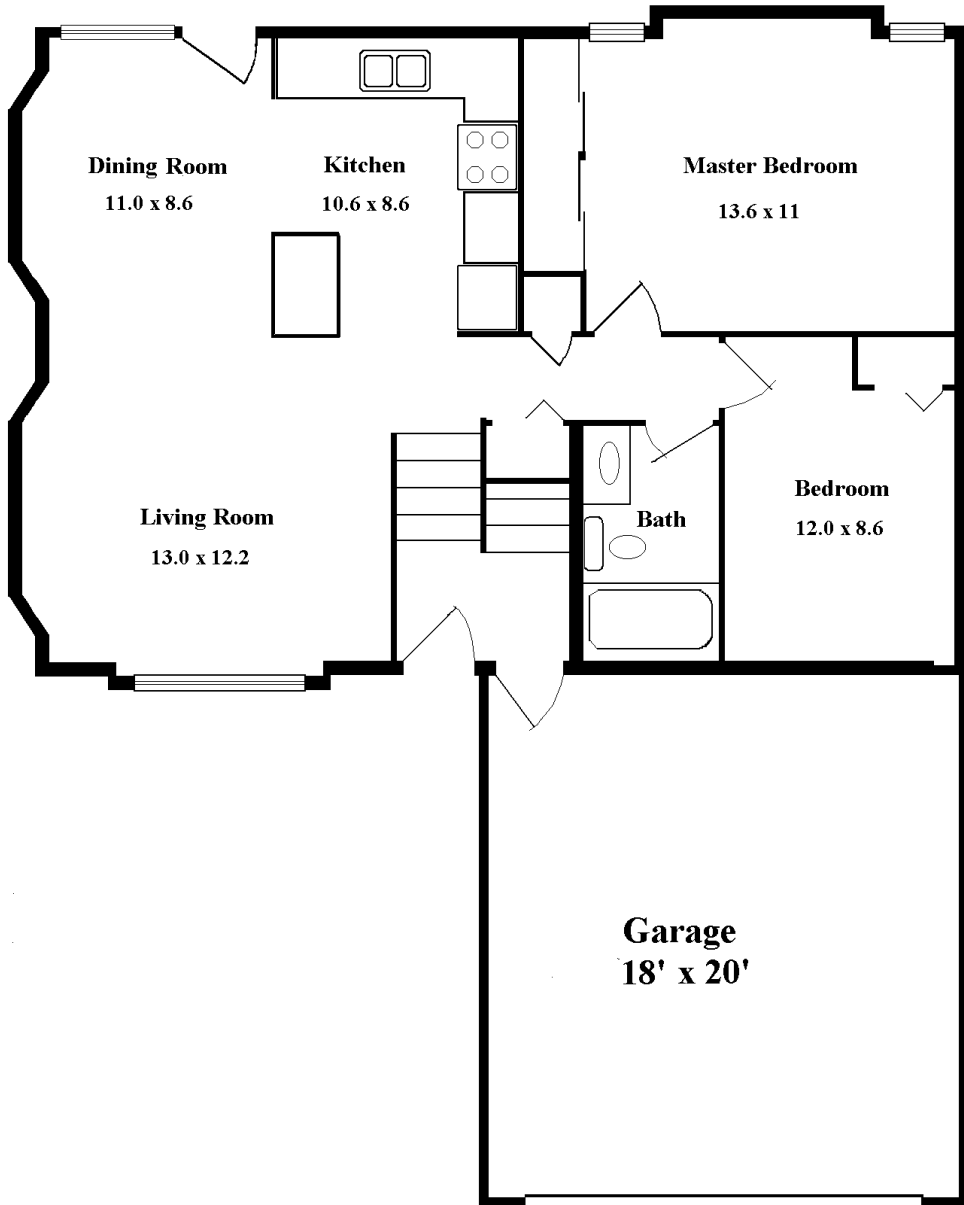
Pictures are of Former Showhome

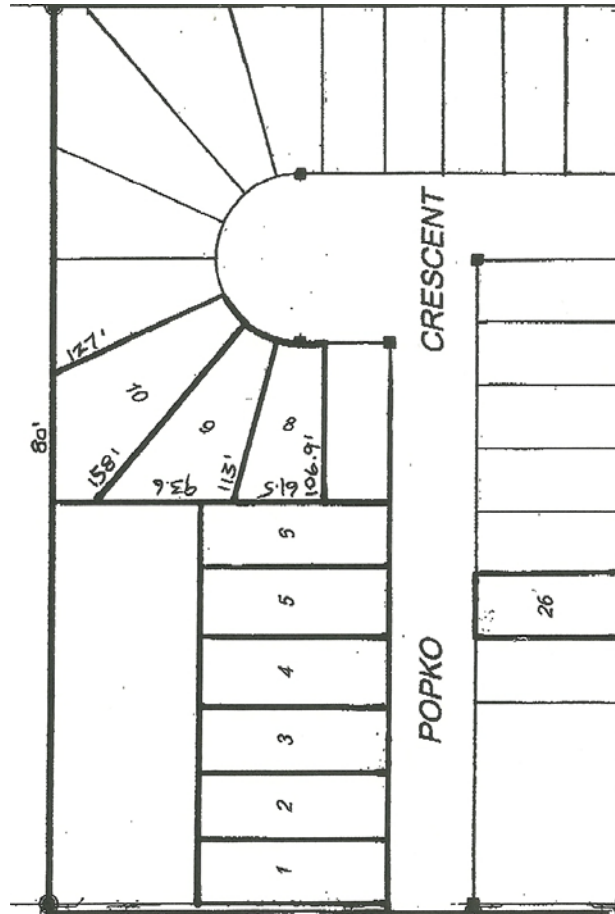
ODESSY HOMES LTD ADVANTAGE

Included in our price for 2011

- 1) Purchaser chooses the colour scheme of home with help of designer
- 2) Includes High Energy Efficient furnace
- 3) Tripane or Low E PVC windows (casement windows used in all bedrooms and where design permits)
- 4) 2 x 6 Energy Efficient construction
- 5) Piled foundation
- 6) R20 Fiberglass insulation in walls
- 7) R50 Fiberglass blown in insulation in ceiling
- 8) R20 Interior insulation in basement with added Styrofoam to frost line and accoustical air sealant
- 9) Roughed-in plumbing in basement (waste lines)
- 10) 40 Gallon Electric hot water tank
- 11) Sump pump and back water valve
- 12) Deadbolt locks
- 13) Construction stage Survey Certificate and Zoning Memorandum included
- 14) Dozens of choices available to upgrade and personalize your home
- 15) Five year New Home Warranty
- 16) Twenty years of experience in Energy Efficient building techniques
- 17) Low maintenance exterior home design to enhance street appeal
- 18) Experienced sales consultants to assist you
- 19) Discount Mortgage Rates OAC
- 20) House wrap installed to enhance Energy Efficiency
- 21) Floor float basement perimeter framing
- 22) Colonist interior doors standard
- 23) Window grills on front elevation included
- 24) Enhanced lighting package included, with pot lights
- 25) Upgraded door hardware included
- 26) Maple cabinets standard in most models (Mount Laurel and Richmond models excluded)
- 27) Wood capping on half walls included
- 28) Rounded drywall corners included
- 29) Supplier Special Discounts available
- 30) Appliance Package Discounts available
- 31) Designer niches included, some with lighting
- 32) Brickwork included on front elevations
- 33) One piece tubs and shower units standard
- 34) Two exterior frost free taps
- 35) 20 ft wide garage available on all models (Richmond model excluded)
- 36) Basement designed to create maximum space efficiency

*While all information contained herein has been provided by the vendor(s) and deemed reliable, this information cannot be guaranteed by Century 21 Carrie.com as to its accuracy.





Popko Crescent

Lot 1 (corner): 42x127
 Lot 2: 44x127
 Lot 3: 44x127
 Lot 4: 48x127
 Lot 5: 48x127
 Lot 6: 43.4x127
 Lot 8 (small pie)
 Lot 9 (medium pie)
 Lot 10 (large pie)
 Lot 26: 44x100

Lots 1,2,3: Bungalow Only

Lots 4,5,6: All Plans

Lot 8: All Plans *except bungalow*

Lots 9,10: All Plans

Lot 26: Vintage or Mount Laurel